

PA200 and PA500

Digital Precision Altimeters



High performance electronics in a proven compact and robust design for accurate height off seabed and subsea distance measurements.

Full digital synthesis of transmit and receive frequencies, together with greatly improved input dynamic range.

Tritech's digital precision altimeters offer configurable design with a wide range of options available. OEM configurations include, for example, low magnetic signature rigid Delrin™ (Plastic) housings or supplied with a right-angled transducer.

Output for the PA200 or PA500 can either be simultaneous analogue and digital outputs, allowing them to be interfaced to a wide range of PC devices, (including operated through Tritech's data acquisition and logging software, Seanet Pro), data loggers, ROV telemetry systems and multiplexers.

The 500kHz PA500 Altimeter is supplied with Tritech's 700 series bathy.

In addition, Tritech's altimeters are supplied with AltTest diagnostic software which provides a simple way of communicating with Tritech altimeters and displays real-time current and average data. AltTest is compatible with all configurations of the Tritech PA200 and PA500 altimeter.

Benefits

- Millimetre resolution capability
- Use for distance measurement
- Compact and low weight
- Various connector options
- Highly configurable design

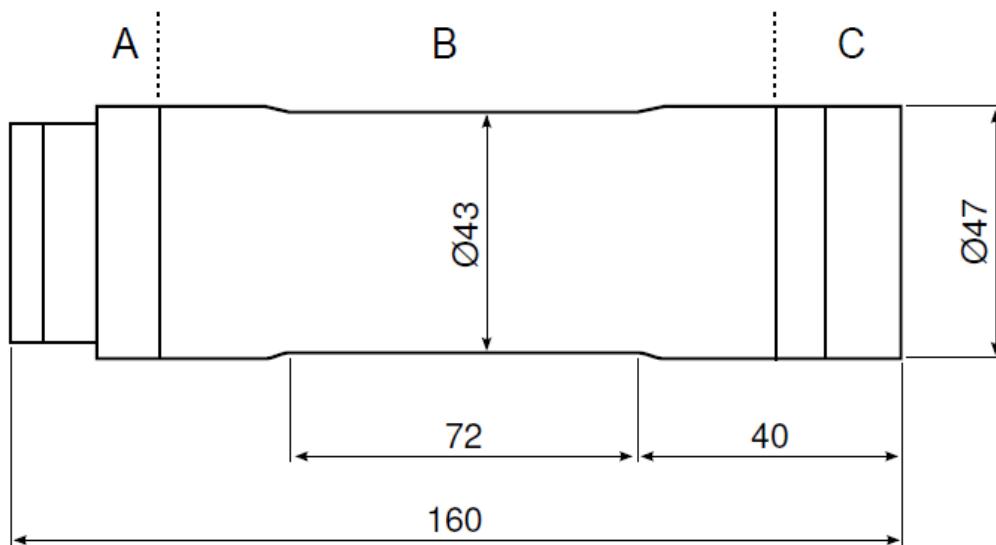
Features

- Analogue output
- Digital output
- Free running output
- Interrogated output
- Optional low operating voltage
- 700m, 4000m or 6800m ratings

Applications

- ROV and AUV altitude
- Under ice measurement
- Integration with oceanographic sensors
- Low cost hydrographic surveys
- Integration with bathymetric systems
- Touchdown monitoring of subsea structures
- Wave height measurement
- Monitoring of scouring on bridge supports

Specification



Not to scale, dimensions in mm.

Acoustic specification	PA200		PA500		Resolution	
	Operating frequency	200kHz		500kHz		Digital
Beamwidth	20° conical		6° conical		Analogue	0.025% of range
Range	0.7m to 50m	1m to 100m	0.4m to 50m	0.1m to 10m		

Electrical and communications	
Supply voltage	24 VDC at 80mA or 12VDC at 160mA
Analogue output	0 to 10VDC (with 24V power supply), 0 to 5VDC or 4 to 20mA
Communication	RS232 or RS485
Output modes	Free running, interrogated or part of multidrop network

Physical specification	
Depth rating	700m with Delrin™ housing (aluminium alloy endcap) 4000m with aluminium alloy housing 4000m/6800m with stainless steel housing 6800m with titanium 6Al-4V housing
Materials	Dependent on depth, as shown above for straight transducer models. All right-angle transducers are ABS (part C in the diagram).
Weight in air	1.15kg
Weight in water	0.8kg
Temperature rating	-10° to 35°C (operational), -20° to 50°C (storage)

Specification subject to change in line with Trittech's policy of continual product development

Marketed by:

Trittech International Limited
Peregrine Road, Westhill Business Park
Westhill, Aberdeenshire AB32 6JL
United Kingdom
email: tritech-sales@moog.com
Tel: +44 (0)1224 744111

