



## FT510 GRAVITY CORER

The latest Feritech FT510 Gravity Corer is robust and simple to operate in almost any water depth. The design is based on proven concepts but with innovative improvements in offering increased survey productivity. Examples include the quick swap barrel release and adjustable weights to control penetration.

The strong stabilising head with integral fins ensures that the corer penetrates the seabed as close to vertical as possible. The system is supplied with configurable weights allowing for 49-816kg of additional weight (available in steel and lead), controlling penetration for a range of projects – coastal environments to deep water locations, and everything in between.

### PRODUCT HIGHLIGHTS

- Full ocean depth rating
- 1-12m barrels in 1m increments
- Configurable weights available from 49-816kg in steel or lead
- Type A barrel – OD 101.6mm, sample – 84mm
- Type B barrel – OD 127mm, sample – 106mm
- Upgraded piston corer package available
- Integration with Feritech HUB software
- Consumables in stock
- Various LARS options available

#### Innovative Engineering

All our products are designed, manufactured and tested to the highest standards by our UK team. Many are available immediately from stock, providing unparalleled access to spares and consumables.

#### Bespoke Solutions

All our systems work straight out of the box and can be mobilised within hours. As with all Feritech products, we can tailor it to your exact needs. Please contact us to discuss your requirements.

#### Global Warranty & Support

All our equipment comes with a global support and warranty package. With global delivery and exceptional reliability, get the best technical support wherever and whenever you might need it.



## Non-Return Valve and Quick Release

The non-return valve retains both the barrel and the sample obtained. The same non-return valve is used on the Piston Corer and the Vibrocorer and many customers now use our valve instead of the piston with comparable results.

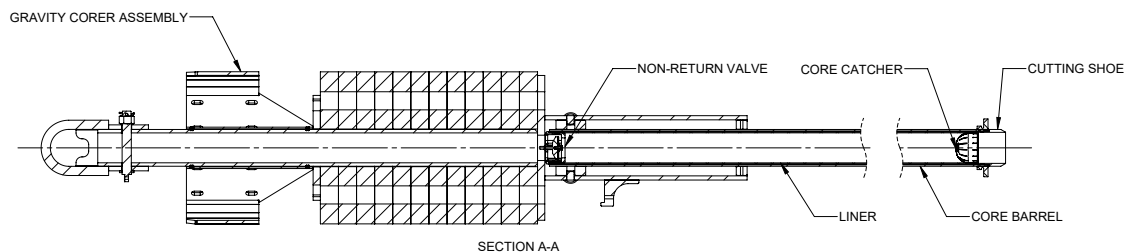
We use a special valve that sits in a uniquely shaped receptacle, creating a vacuum above the sample while still allowing water to escape as the barrel enters the seabed. This means operation is much simpler and safer and you still get excellent recovery. A traditional piston is available if required, with the added advantage of our hydrostatic safety release making the entire operation much safer.

Our quick release system means that the barrel can be removed in a matter of minutes thanks to the quick release horseshoe design used on all our systems.

## Removable Weights

The removable weights allow the unit to be configured for the optimal penetration depending on ground type and requirements. Weights are available in both steel and lead and can be used in any number up to 12.

- Corer with **steel** weights and 3m barrel 221-760kg (6m barrel 260-800kg)
- Corer with **lead** weights and 3m barrel: 240-988kg (6m barrel 280-1020kg)



SECTION A-A

