

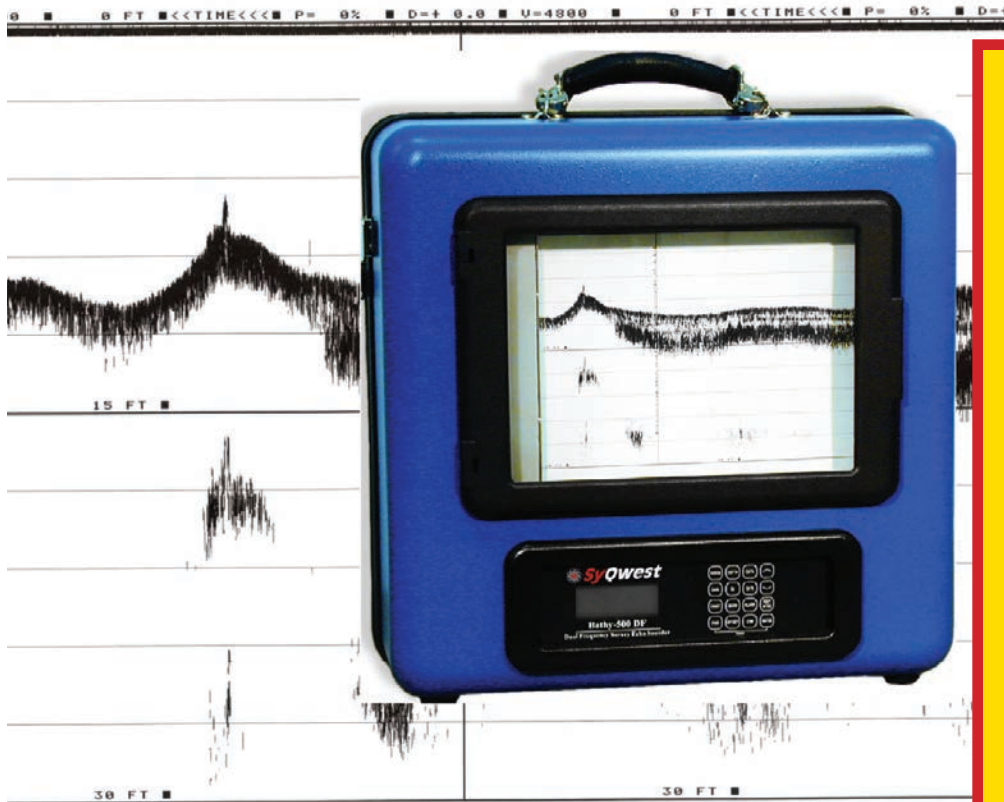
 **SyQwest Incorporated**

Bathy 500 HD™ **Survey Echo Sounder**

The **Bathy 500 HD™** is a state-of-the-art electronic survey instrument used to generate precision chart recordings and digital data output. Low power consumption, portability, ease of use, rugged construction, and built in communication interfaces for navigation/data logging devices make the **Bathy 500 HD™** the ideal solution for shipboard surveys.

NEW IMPROVED DESIGN

The sensor unit is extremely compact, interfaces directly to a standard laptop PC and comes complete with a light-weight and efficient acoustic transducer and integrated thermal printer.



NEW FEATURES!!!

- ◆ CW & FM Chirp
- ◆ Realtime HD Data Storage (16 bit, 96kHz, SEG-Y Format)
- ◆ Internal Removable HD Memory Storage (32 GB SD Flash Card)
- ◆ Single Channel Option (24kHz, 33kHz, 50kHz, or 210kHz)
- ◆ Simultaneous Dual Channel Option (24/210kHz, 33/210 kHz or 50/210 kHz)
- ◆ TVG and DC Gain Steps (1dB)
- ◆ Windows PC Playback Application
- ◆ Ethernet Link to PC Application (RJ-45)

- ◆ Geographic Position Input; NMEA Compatible ◆ Depth Accuracy +/- 0.1%
- ◆ Hypack & HydroPro Compatible
- ◆ Data Storage & Playback ◆ Zoom Modes ◆ Event Marks ◆ Sound Velocity
- ◆ Draft ◆ Low Input Power ◆ SEG-Y Output

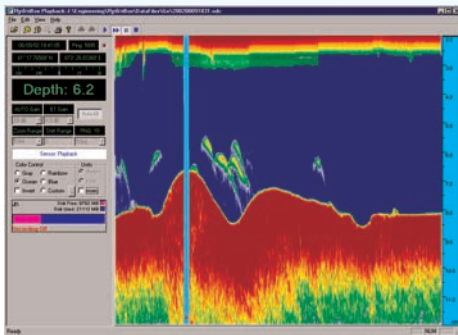
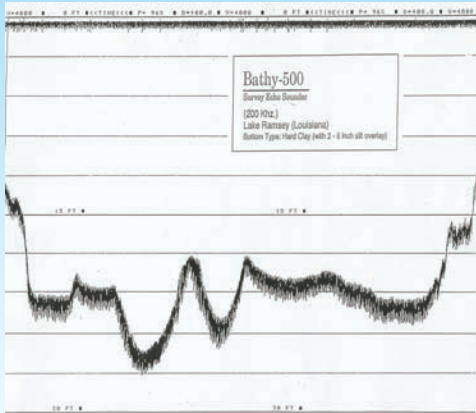
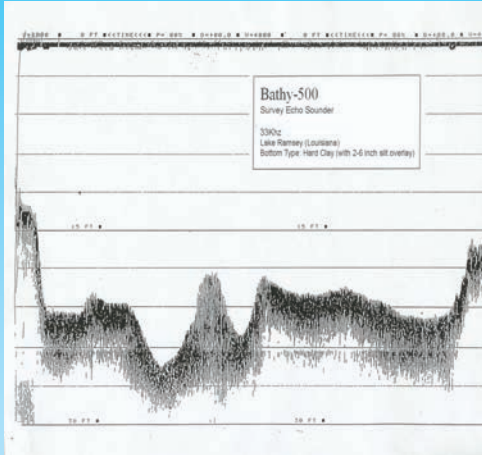
 **SyQwest inc**

30 Kenney Drive / Cranston, RI 02920
Tel: (401) 432-7129 Fax: (401) 432-7029
Email: sales@syqwestinc.com Web: www.syqwestinc.com



SyQwest Incorporated

Bathy 500 HD™



SPECIFICATIONS

Units:	Feet or Meters
Depth Ranges:	0-15, 30, 60, 120, 240, 480, 960, 1920 Ft. 0-5, 10, 20, 40, 80, 160, 320, 640 Meters. Auto-ranging Modes in all units.
Draft Offset:	0 to 30 feet (10 meters)
Manual Gates:	Shallow & Deep, (0.1 ft / 0.1mt resolution)
Shift Range:	1 foot (1meter) increments to bottom of selected range
Zoom Range:	15, 30, 60, 120, 240 feet 5, 10, 20, 40, 80 meters
Zoom Modes:	Bottom Zoom, Bottom Lock, Marker Zoom, Zoom (Playback Only)
Display:	Normal Data, Zoom Data, Selectable Color Palette
Depth Resolution:	0.1 feet (0.1 meters)
Depth Accuracy:	+/-0.5% of depth
Sound Velocity:	4600 - 5250 ft/sec (1400 - 1600 mt/sec)1 mt/sec int.
Navigation Input:	NMEA 0183, GLL, GGA, RMC, VTG, VHW, HDT. Selectable Baud Rate, RS-232 .
Data Output:	NMEA 0183; DPT, DBT, PMC; ODEC
Bathy 500 I/F:	Ethernet via RJ-45
Printer :	Integrated Thermal Printer
Heave Input:	TSS1 Format, 9600 Baud Rate
Shallow Water Operation:	<2.5 meters; bottom type dependent
Transmit Rate:	Up to 10 Hz, depth and operator mode dependent.
Eventing:	Manual, Periodic, External (user selectable)
Frequency Output:	24kHz, 33kHz, 50kHz, 210kHz
Data File Storage:	External- ODEC Format(8 bit, 800 pixel), SEG-Y Format envelope (16 bit, 96kHz rate), Internal-32 GB SD Flash.
Data File Playback:	Files played back and printed at Normal, Rapid Advance ,or Scroll Bar, with Pause and Zoom
Transmit Output Power:	300 Watts (pulsed), 1000 Watts capable
Input Power:	110-220 VAC, 10-30 VDC, Nominal Power 20 watts, Reverse Polarity and Over Voltage Protected.
Dimensions:	22.9 cm (9") Depth, 44.5 cm (17.5") Width, and 48.3 cm (19") Height. (sensor unit only)
Weight:	16 kg (35 lbs). (sensor unit only)
Environmental:	25°C to +60°C Operating Temperature (-55°C to +90°C Storage) Water Resistant EMC meets EN60945 Emissions,CE Compliant

Options:

- Over The Side Mount Kit
- 24/33/50/210kHz
- Dual Frequency Operation
- SonarWiz
- Hypack



30 Kenney Drive / Cranston, RI 02920
Tel: (401) 432-7129 Fax: (401) 432-7029
Email: sales@syqwestinc.com Web: www.syqwestinc.com